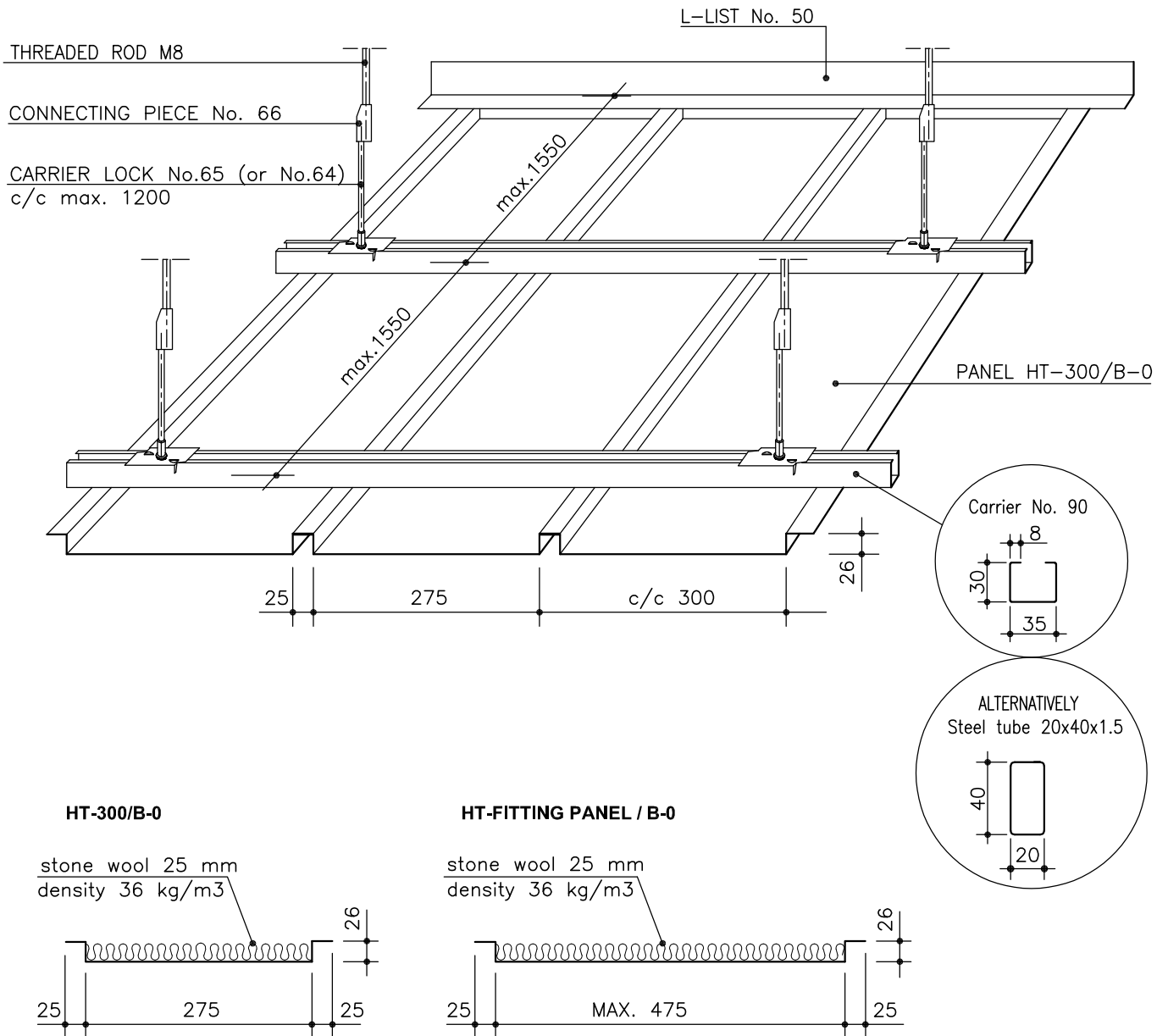


## MARINE PANEL LAUTEX HT-300 / B-0 / A-15 DECK

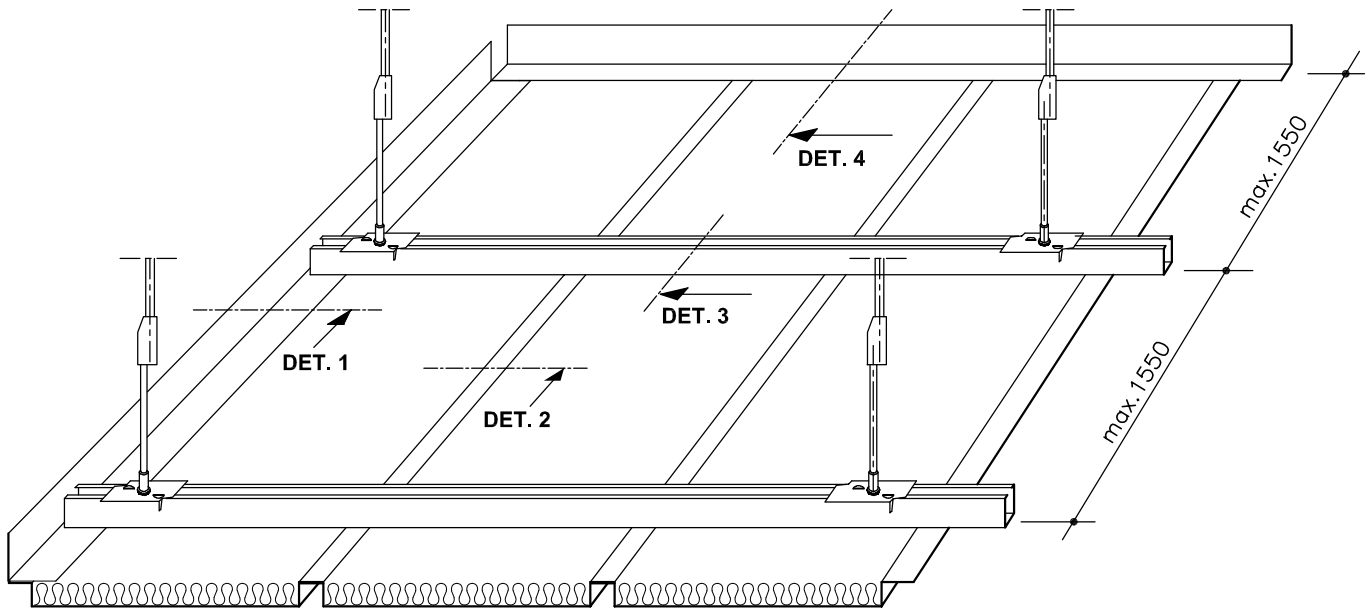


### HT-300 PANELS / CLASSIFICATION "B-0"

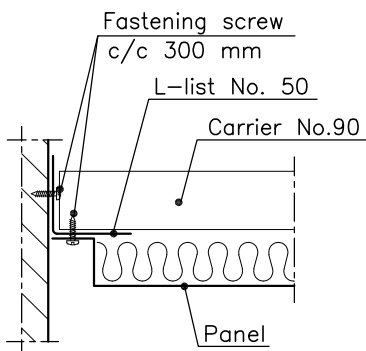
Material	0.6 mm Steel
Width	200 mm, 300 mm, fittings max 500 mm
Height	26 mm
Length	max 6500 mm, fittings max 4000 mm
Insulation	stone wool, density 36 kg/m <sup>3</sup> , s=25 mm
Finish	NCS S or RAL color
Protective film	standard
End bendings	standard
Other solutions	please contact Lautex sales



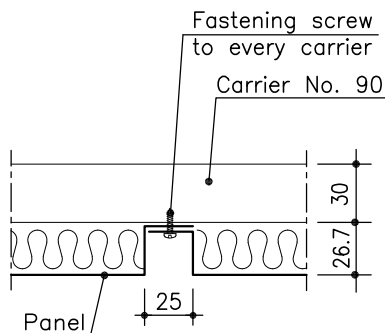
## MARINE PANEL LAUTEX HT-300 / B-0 / A-15 DECK



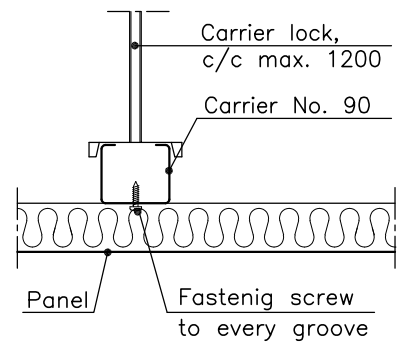
**DET. 1**



**DET. 2**

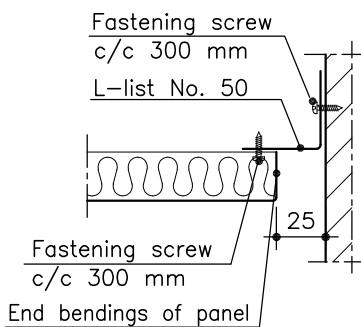


**DET. 3**



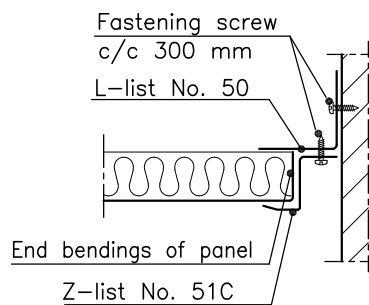
**DET. 4 (ALT. 1)**

Without Z-list



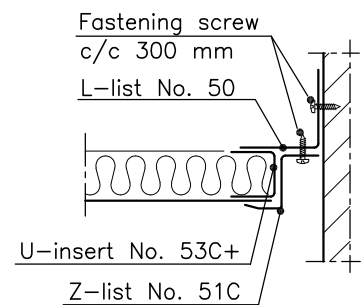
**DET. 4 (ALT. 2)**

With Z-list

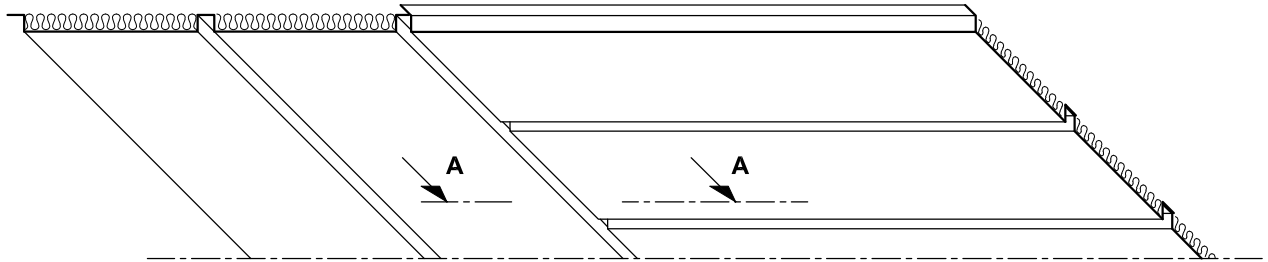


**DET. 4 (ALT. 3)**

Panels cut: with Z- and U-insert

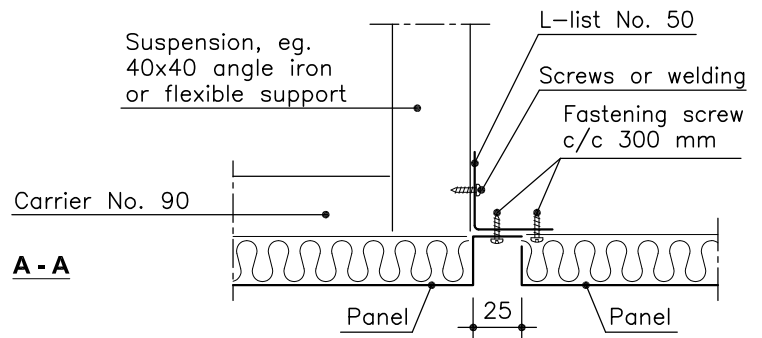


## MARINE PANEL LAUTEX HT-300 / B-0 / A-15 DECK



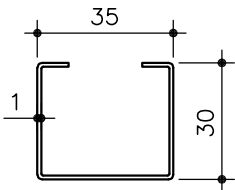
### CHANGING THE INSTALLATION DIRECTION

- corridor junction
- recess at cabin door

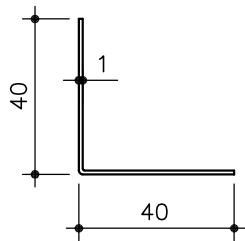


### ACCESSORIES

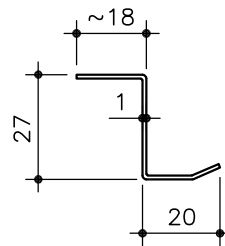
No. 90 CARRIER



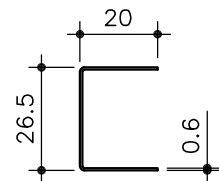
No. 50 L-LIST



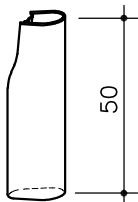
No. 51C Z-LIST



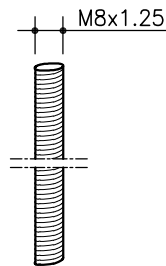
No. 53C+ U-INSERT LIST



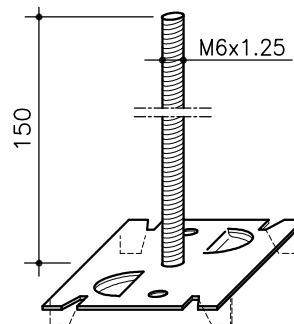
No. 66 CONNECTING PIECE



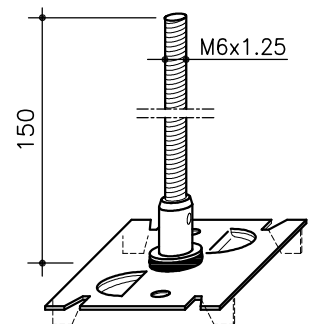
No. 70 THREADED ROD M8



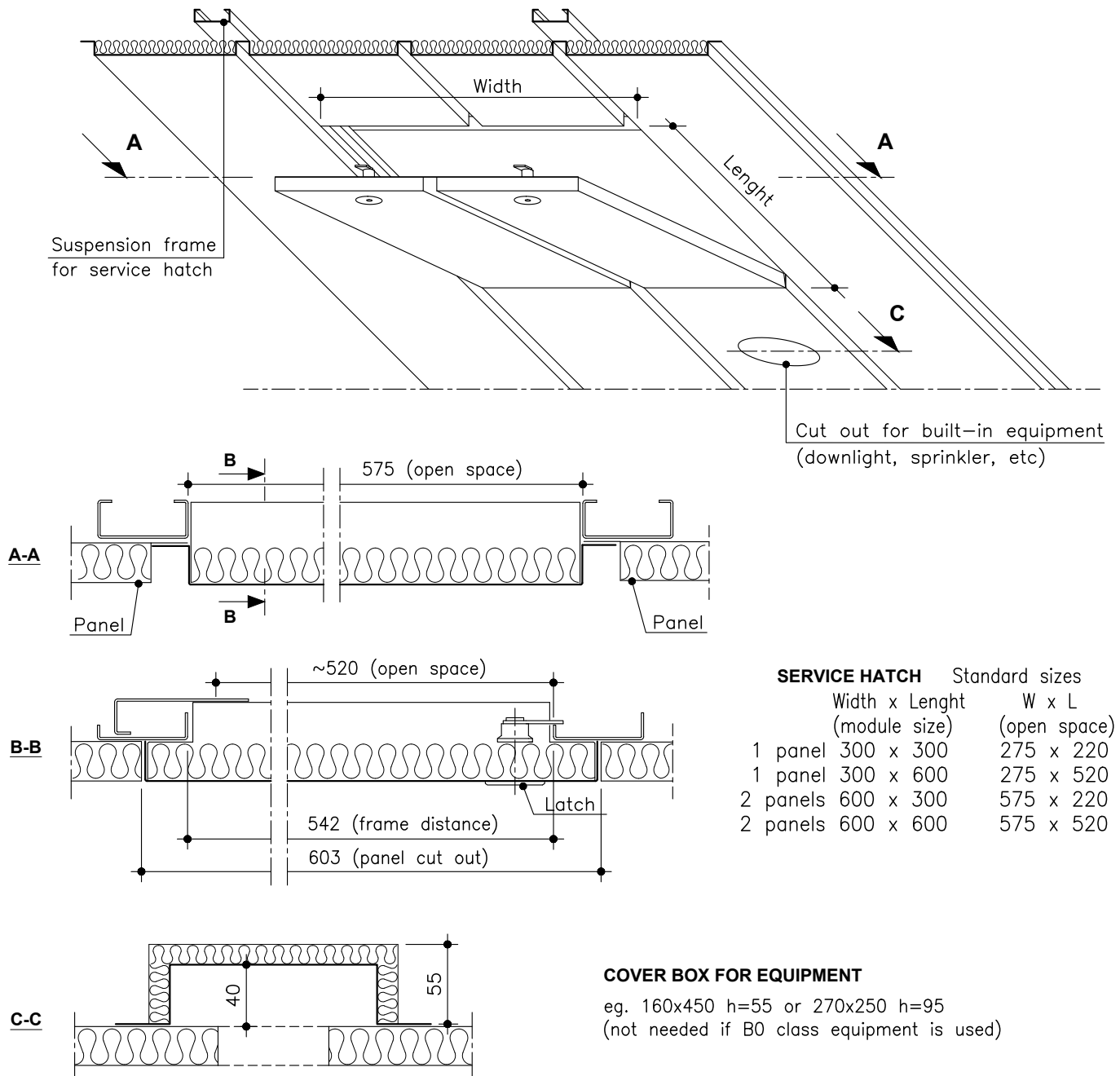
No. 64 CARRIER LOCK



No. 65 CARRIER LOCK  
VIBRATION INSULATED



## MARINE PANEL LAUTEX HT-300 / B-0 / A-15 DECK



<b>SERVICE HATCH</b>		Standard sizes
		Width x Length (module size)
		W x L (open space)
1 panel	300 x 300	275 x 220
1 panel	300 x 600	275 x 520
2 panels	600 x 300	575 x 220
2 panels	600 x 600	575 x 520

### COVER BOX FOR EQUIPMENT

eg. 160x450 h=55 or 270x250 h=95  
(not needed if B0 class equipment is used)

### THEORETICAL NEED OF SUSPENSION STRUCTURES

Product	Need of material
Carrier No. 90	0.8 m/m <sup>2</sup>
Carrier lock	1 pcs / carrier meter
L-list No. 50	0.8 – 1.4 m/m <sup>2</sup>
Z-list No. 51C	0 – 1.4 m/m <sup>2</sup>
Screw 4.2X13 No.75	~8 pcs /m <sup>2</sup>

### WEIGHT OF PANELS KG / M2

Panel	HT-300/B-0
Material	0.6 mm steel 25 mm stone wool
Weight	6.75 kg

### WEIGHT OF OTHER CEILING MATERIALS

Carrier No. 90	0.83 kg/m
Carrier lock	0.08 kg/pcs
L-list No. 50 (1.0 mm steel)	0.64 kg/m
Z-list No. 51C (1.0 mm steel)	0.52 kg/m
U-insert No. 53C+ (0.6 mm steel)	0.30 kg/m

