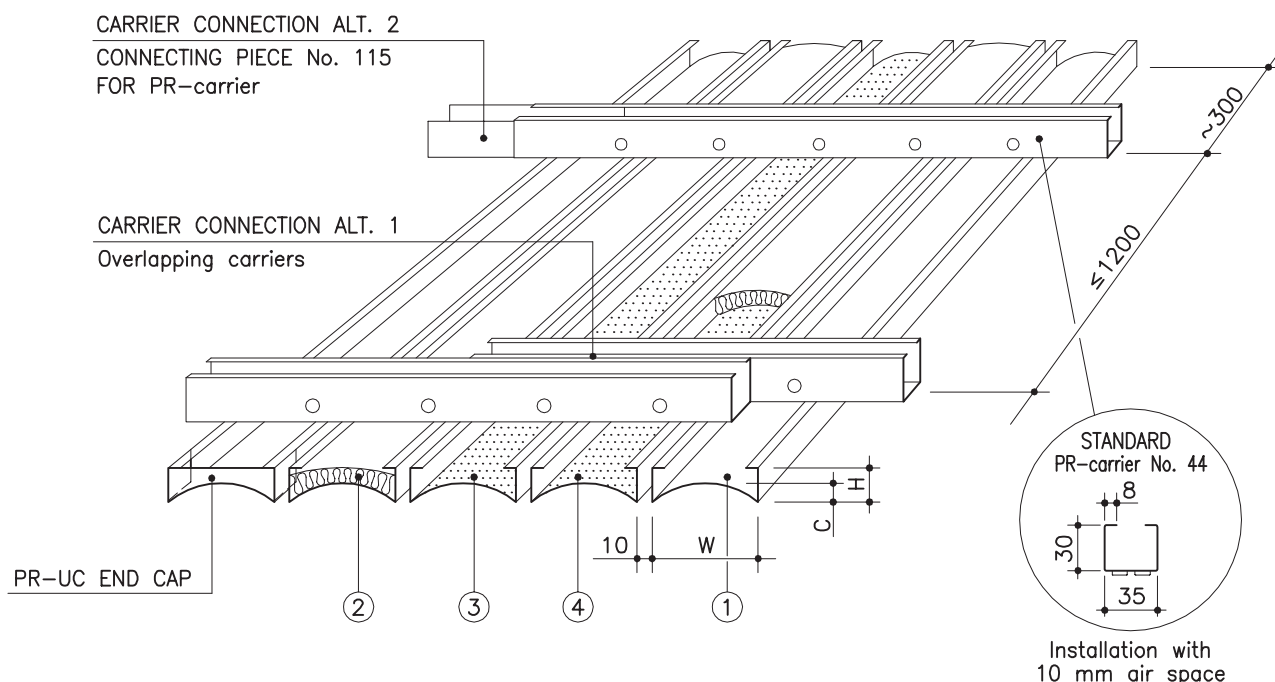


MARINE PROFILE LAUTEX PR-UC



- ① = PR-UC; unperforated without acoustic inlay
- ② = PR-UCT; unperforated with mineral wool in plastic
- ③ = PR-UCR; perforated without acoustic inlay
- ④ = PR-UCRT; perforated with mineral wool in plastic

PR-UC PROFILES / CLASSIFICATION "C"

| Profile | H mm | W mm | C mm | length max. mm | material | carrier No. air space 10 mm | connecting piece |
|-----------|---------|---------|---------|-------------------|----------|--------------------------------|---------------------|
| 23x70x23 | 23 | 70 | 12 | 4000 | 0.7 Al | 44E | 189F |
| 26x110x26 | 26 | 110 | 20 | 4000 | 0.7 Al | 44X | 189G |
| 35x200x35 | 35 | 200 | 23 | 4000 | 0.7 Al | 44X | 189H |

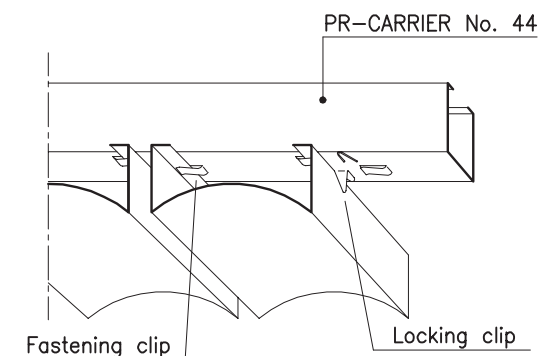
| | |
|-------------------------|---|
| Perforation | Ø 2.0/15 % other alternatives see group 6 "perforations" |
| Air spaces | recommended air space = 10 mm also according to order, but ≥ 10 mm |
| Inlay | mineral wool in plastic |
| Finish | stove enamelled (or anodized) according to any well-known colour chart |
| Protective film | the surface is provided with a protective film if required |
| Loudspeaker profile | see overleaf |
| Downlight unit | see overleaf |
| Connecting piece | see above and pages 22 & 23 |
| Suspension | see page 19 "Suspension systems for profiles" |
| Edge lists | see group 6 "Lautex lists" and pages 22 & 23 "Lautex marine profiles typical details" |
| Installation with PR-UD | see overleaf |
| Diagonal installation | PR-carrier No. 39C...39X for diagonal installation in 45°, air space according to order but ≥ 10 mm, see page 20 & 21 "Curved ceilings and diagonal installation" |
| Other solutions | please contact our technical information department |

Latest information: www.lautex.com

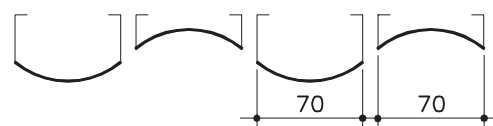
All products are subject to modifications without prior notice

MARINE PROFILE LAUTEX PR-UC INSTALLATION DETAILS AND ACCESSORIES

INSTALLATION WITH AIR SPACE 10 MM

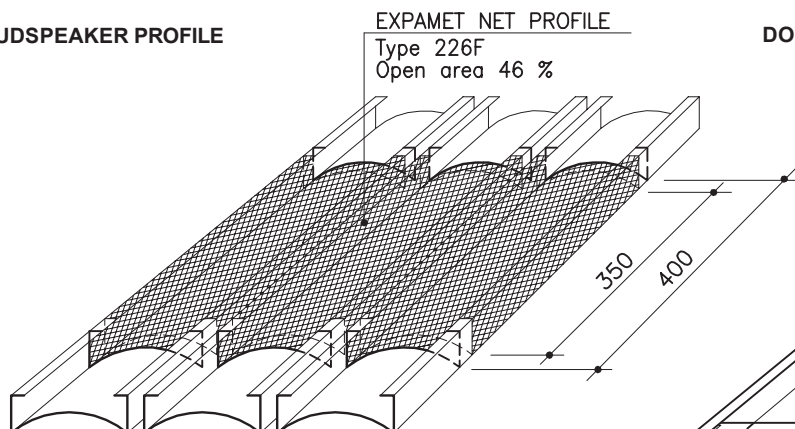


COMBINATION CEILING PR-UC / PR-UD

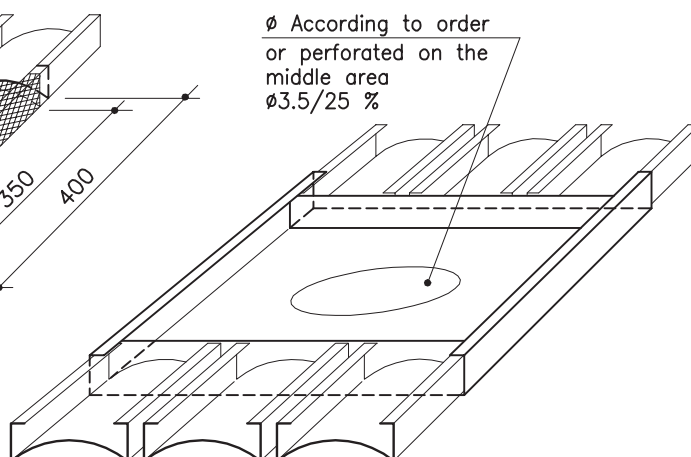


By combining profiles PR-UD and PR-UC, it is possible to create an elegant wavy ceiling.

LOUDSPEAKER PROFILE



DOWNLIGHT OR LOUDSPEAKER PROFILE



SOLUTION OF PROFILE EXTENSION AND PROFILE CONNECTION TO WALL PLEASE SEE PAGES 22 & 23

THEORETICAL NEED OF SUSPENSION STRUCTURES

| Product | Need of material |
|----------------|----------------------------|
| Carrier No. 44 | 1.2 – 1.6 m/m ² |
| Carrier lock | 1 pcs / carrier meter |

WEIGHT OF PROFILES KG / M²

| | PR-UC, 0.7 Al | | |
|--------|---------------|--------|--------|
| Width | 70 mm | 110 mm | 200 mm |
| Weight | 3.12 | 2.87 | 2.58 |

WEIGHT OF OTHER CEILING MATERIALS

| Product | Weight of material |
|-------------------------|------------------------|
| Mineral wool in plastic | 0.52 kg/m ² |
| Carrier No. 44 | 0.83 kg/m |
| Carrier lock | 0.08 kg/pcs |

Latest information: www.lautex.com

All products are subject to modifications without prior notice