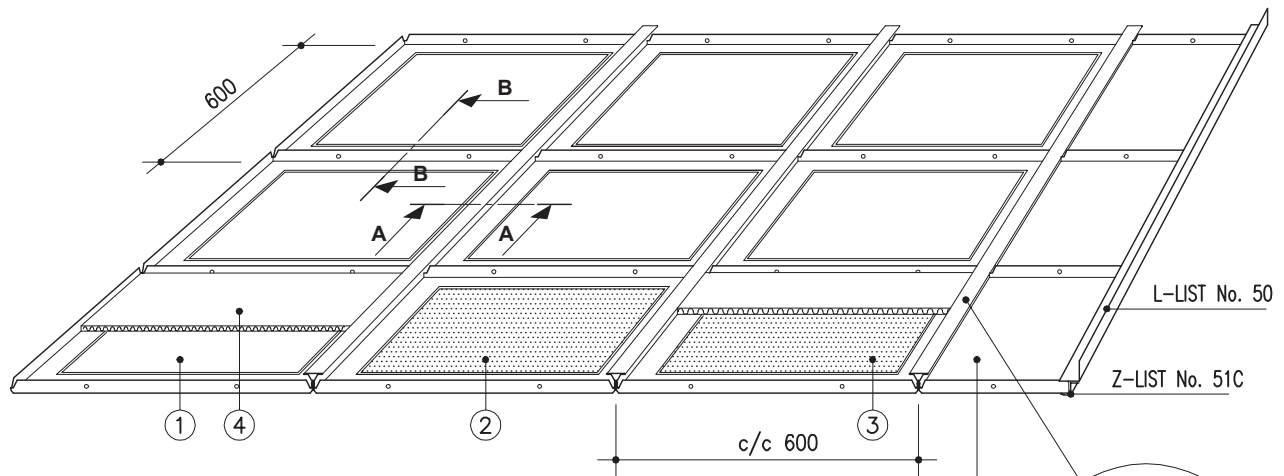
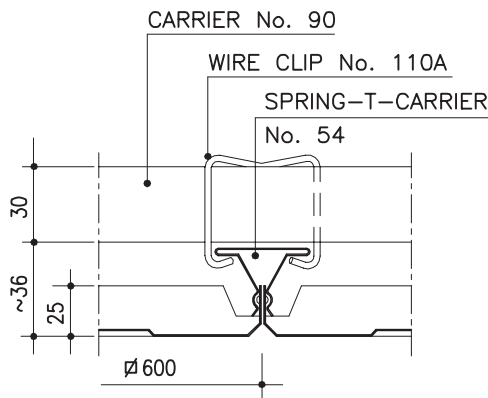


## MARINE CASSETTE LAUTEX FJ-600



### SECTION A - A (ALT. 1)

INSTALLATION WITHOUT AIR SPACE



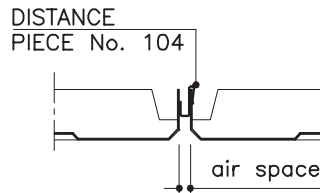
### SECTION B - B (ALT. 1)

INSTALLATION WITHOUT AIR SPACE



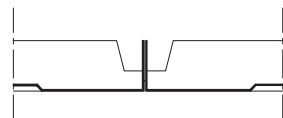
### SECTION B - B (ALT. 2)

INSTALLATION WITH AIR SPACE



### SECTION B - B (ALT. 3)

CASSETTES WITH SHARP EDGES



Also with sharp edges; must be specified when order

### FJ-600 CASSETTES / CLASSIFICATION "C"

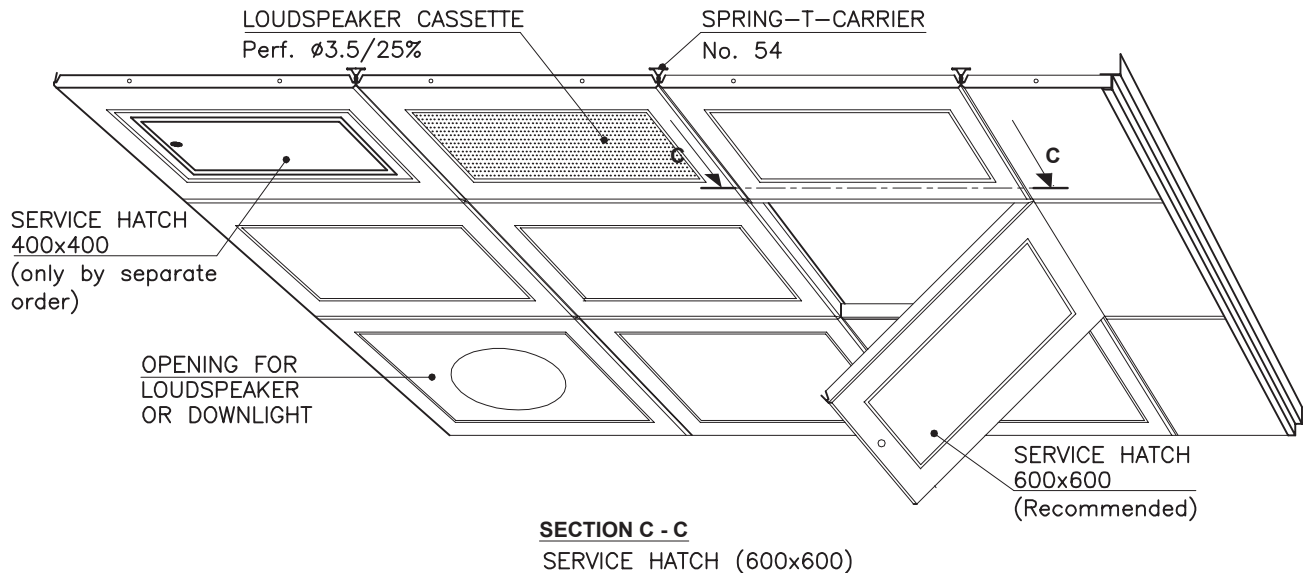
Material	0.7 Al (0.5 Steel)
Module	600x600 mm
Height	25 mm
Perforation	Ø2.0/15% or Ø3.5/25%, other alternatives, see group 6 "perforations"
Inlay	mineral wool in plastic or acoustic felt
Finish	stove enamelled (or anodized aluminium) according to any well-known colour chart
Ventilation	installation also with air space
Protective film	the surface is provided with a protective film if required
Service hatch	see overleaf
Loudspeaker	perforated cassette with Ø3.5/25%
Edge lists	see group 6 "Lautex lists" and page 21 "Lautex marine cassettes typical details"
Downlight unit	see overleaf
Suspensions	see page 18 & 19 "suspensions systems for J-type cassettes"
Other special solutions	please contact our technical information department

- ① = FJ-600; unperforated without acoustic inlay
- ② = FJR-600; perforated without acoustic inlay
- ③ = FJRT-600; perforated, with mineral wool in plastic or acoustic felt
- ④ = FJT-600; unperforated, with mineral wool in plastic
- ⑤ = NJ-600; fitting cassette NJ-600 (0.7 Al)

Latest information: [www.lautex.com](http://www.lautex.com)

All products are subject to modifications without prior notice

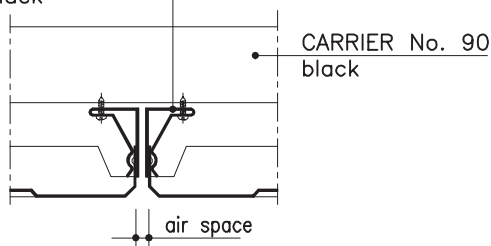
## MARINE CASSETTE LAUTEX FJ-600 INSTALLATION ACCESSORIES



### SECTION A - A (ALT. 2)

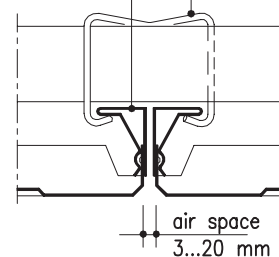
INSTALLATION WITH AIR SPACE  
AROUND THE CASSETTES

HALF SPRING-T-CARRIER  
No. 95, black



HALF SPRING-T-CARRIER  
Pre-assembled No.105  
(See "carriers")

WIRE CLIP  
No.109A...M, R



## CASSETTE CONNECTION TO WALL PLEASE SEE PAGE 21

### THEORETICAL NEED OF SUSPENSION STRUCTURES

Product	Need of material
Carrier No. 90	1.6 m/m <sup>2</sup>
Carrier locks	4 pcs/m <sup>2</sup>
Z-list No. 51C	0.8 - 1.4 m/m <sup>2</sup>
L-list No. 50	0.8 - 1.4 m/m <sup>2</sup>
Spring-T-carrier No. 54	1.8 m/m <sup>2</sup>
Wire clip No. 110	2 pcs/m <sup>2</sup>
Screw	4 pcs/m <sup>2</sup>

### WEIGHT OF CEILING

Cassette	FJ-600	
Material	0.7 Al	0.6 Fe
Weight	2.1 Kg/m <sup>2</sup>	5.3 Kg/m

### WEIGHT OF OTHER CEILING MATERIALS

Product	Weight of material
Carrier No. 90 (1.0 Steel)	0.83 kg/m
Carrier locks	0.80 g/pcs
Z-list No. 51C (1.0 Al)	0.15 kg/m
L-list No. 50 or 83 (1.5 Al)	0.32 kg/m
L-list No. 50 or 83 (1.0 steel)	0.62 kg/m
Spring-T-carrier (0.5 Steel)	0.44 kg/m
Mineral wool in plastic	0.52 kg/m <sup>2</sup>

Latest information: [www.lautex.com](http://www.lautex.com)

All products are subject to modifications without prior notice