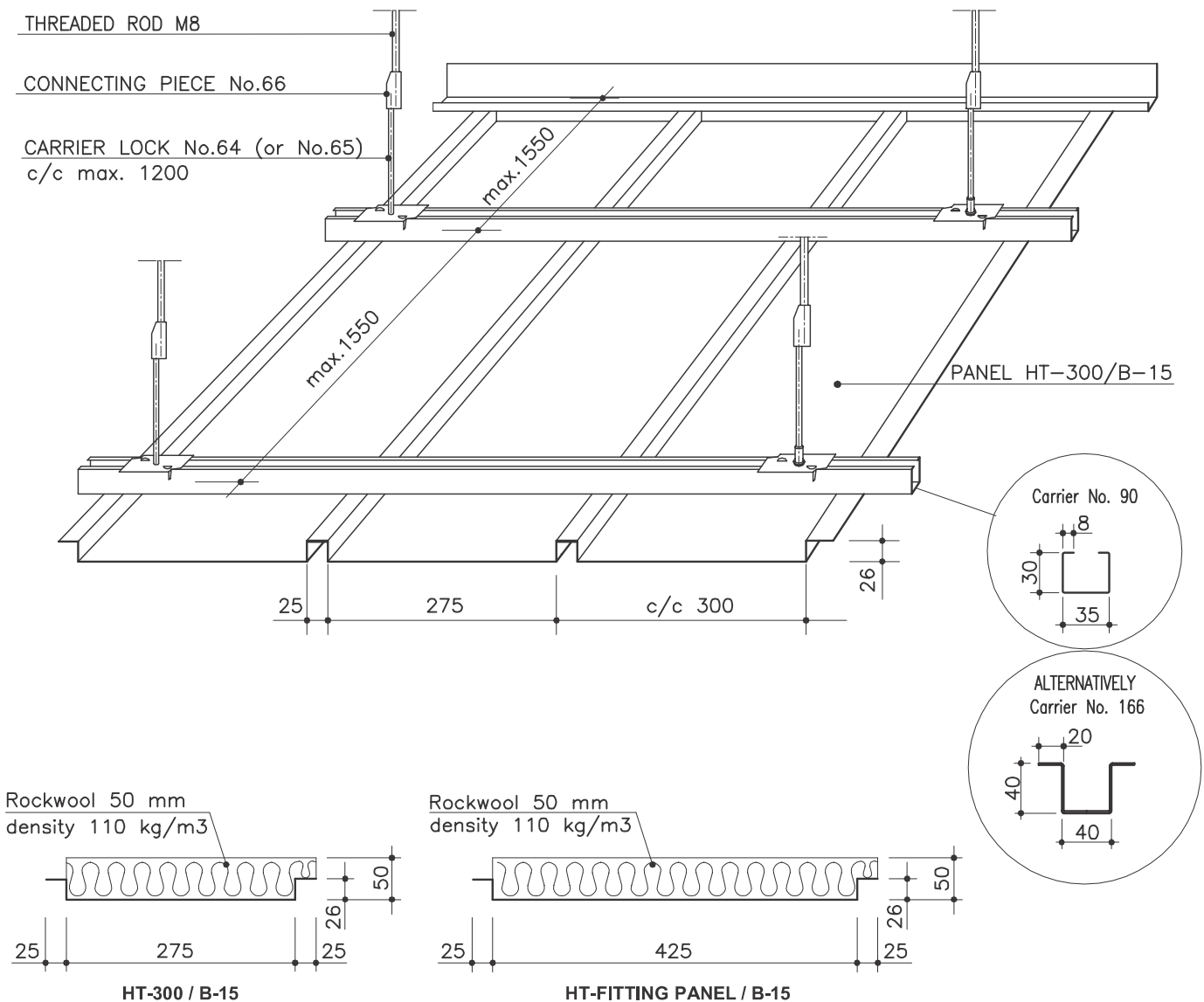


MARINE PANEL LAUTEX HT-300 / B-15 / A-30 DECK



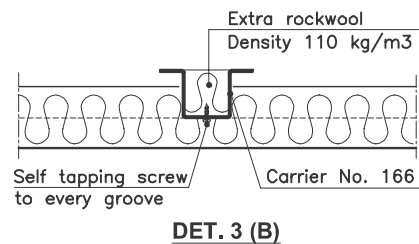
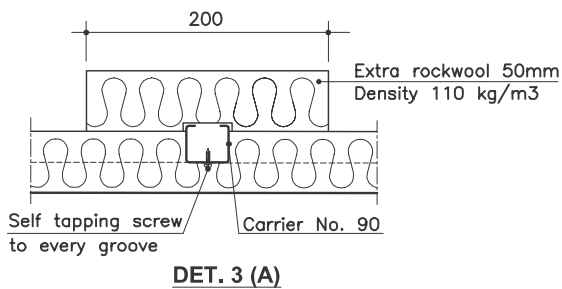
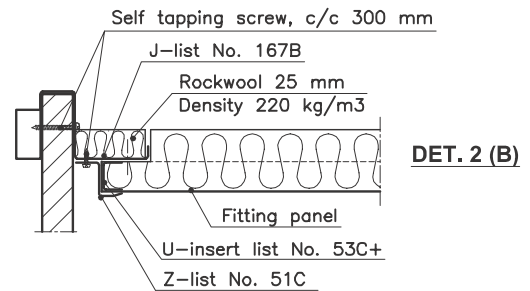
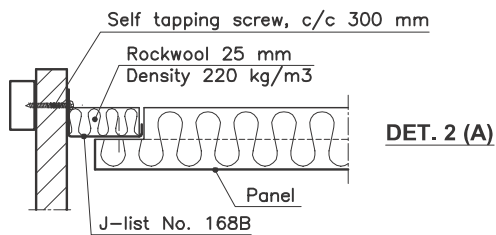
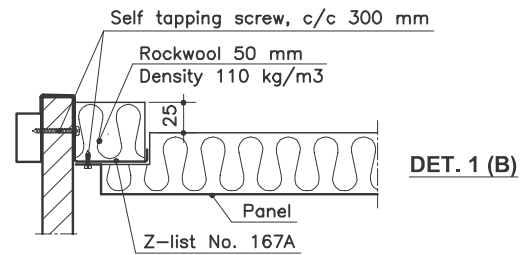
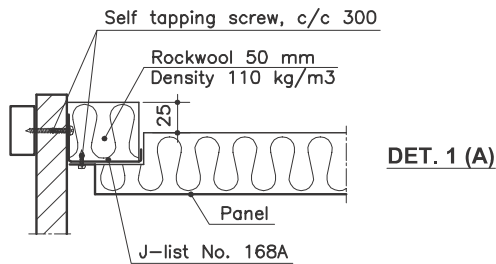
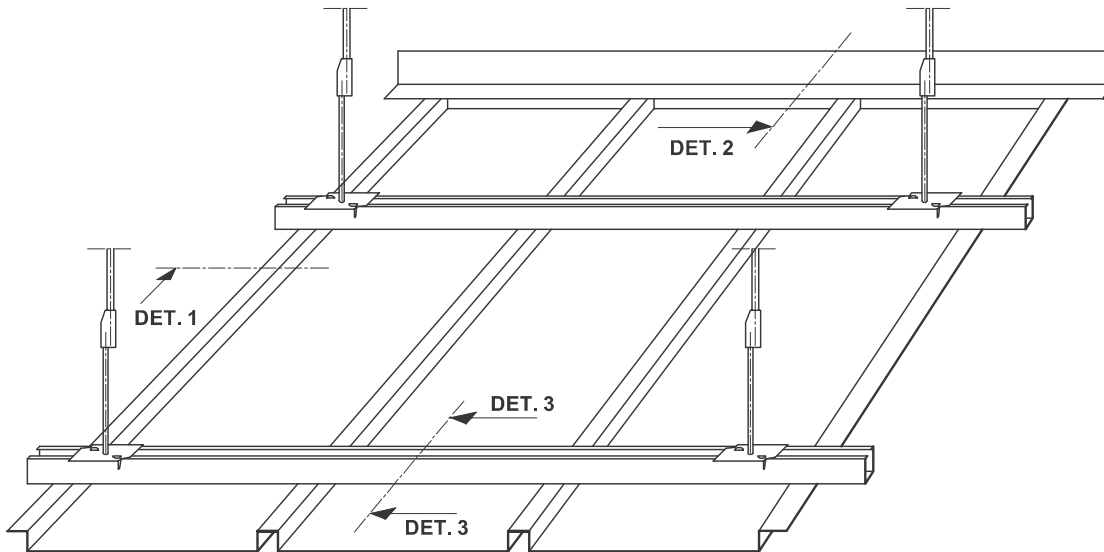
HT-300 PANELS / CLASSIFICATION "B-15"

| | |
|-------------------------|--|
| Material | 0.6 mm steel |
| Width | 200 mm, 300 mm, fittings max. 450 mm |
| Height | 26 mm (50 mm with insulation) |
| Length | max 6500 mm |
| Insulation | rockwool, density 110 kg/m ³ , s=50 mm |
| Finish | stove enamelled according to any well-known colour chart |
| Protective film | the surface is provided with a protective film |
| End bendings | standard |
| Extra rockwool | density 110 kg/m ³ |
| Other special solutions | please contact our technical information department |

Latest information: www.lautex.com

All products are subject to modifications without prior notice

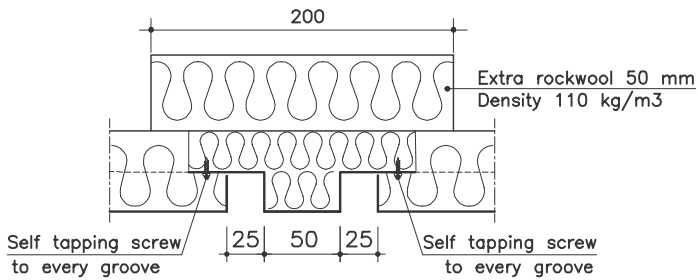
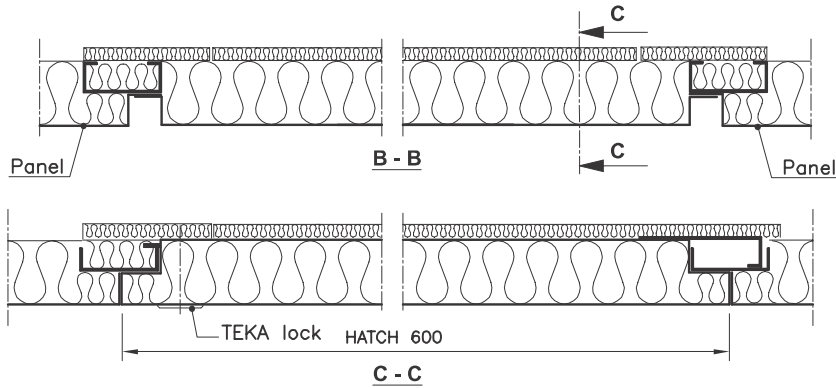
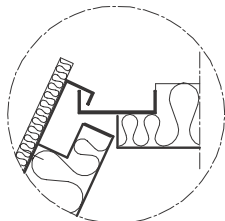
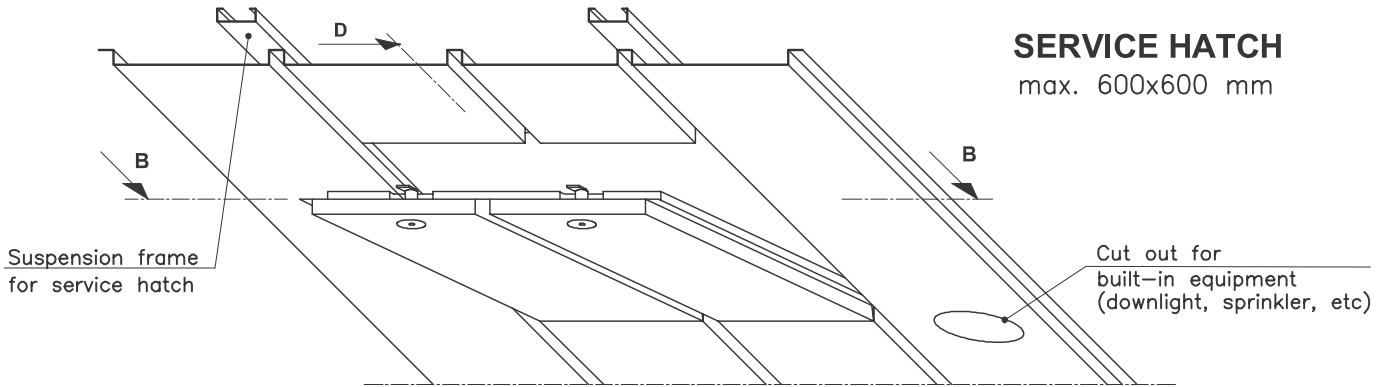
MARINE PANEL LAUTEX HT-300 / B-15 / A-30 DECK



Latest information: www.lautex.com

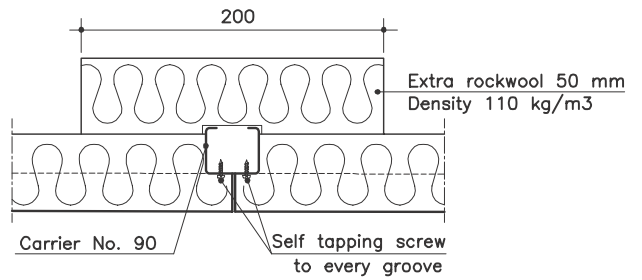
All products are subject to modifications without prior notice

MARINE PANEL LAUTEX HT-300 / B-15 / A-30 DECK

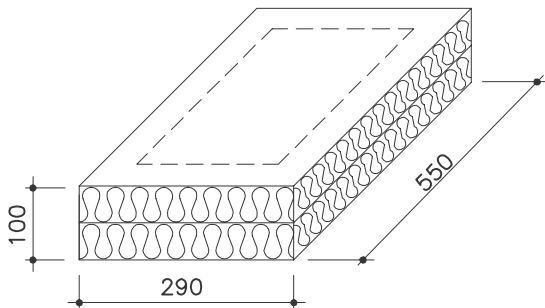


D-D (A)

PANEL JOINT



D-D (B)

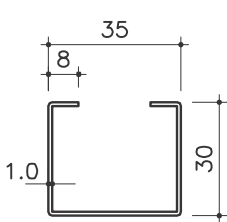


Wool box above the equipments

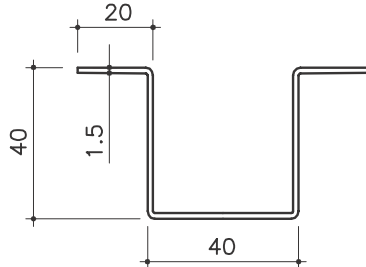
Latest information: www.lautex.com

All products are subject to modifications without prior notice

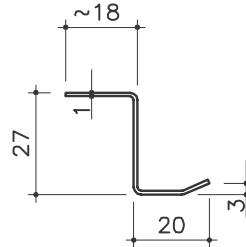
MARINE PANEL LAUTEX HT-300 / B-15 / A-30 DECK ACCESSORIES



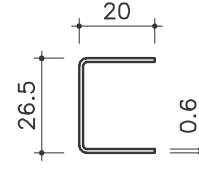
No. 90. CARRIER



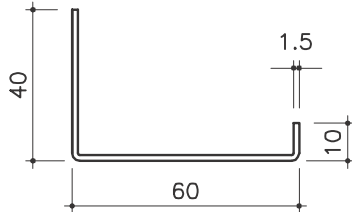
No. 166. CARRIER



No. 51C. Z-LIST



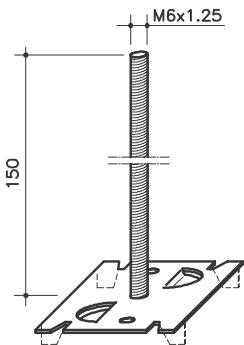
No. 53C+
U-INSERT LIST



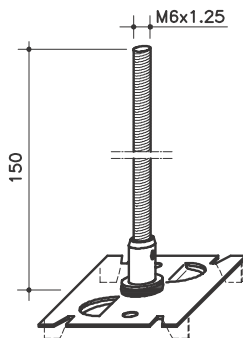
No. 168A and 168B J-LIST



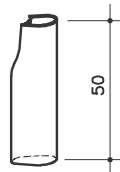
No. 167A and 167B Z-LIST



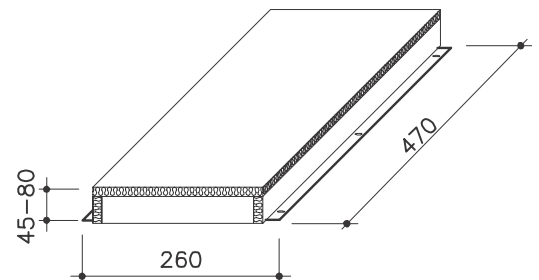
CARRIER LOCK
No. 64



CARRIER LOCK
No. 65
VIBRATION INSULATED



CONNECTING PIECE
No. 66



Box above the equipments
Insulated metal box

THEORETICAL NEED OF SUSPENSION STRUCTURES

| Product | Need of material |
|--------------------|----------------------------|
| Carrier No. 90 | 1.2 - 1.6 m/m ² |
| Carrier lock | 1 pcs / carrier meter |
| Z-list No. 51C | 0.8 - 1.4 m/m ² |
| Screw 4.2x13 No.75 | ~7 pcs /m ² |

WEIGHT OF PANELS KG / M²

| | |
|----------|--------------|
| Panel | HT-300/B-15 |
| Material | 0.6 mm steel |
| Weight | 11.2 |

WEIGHT OF OTHER CEILING MATERIALS

| | |
|----------------------------|------------------------|
| Extra rockwool | 5.50 kg/m ² |
| Carrier No. 90 | 0.83 kg/m |
| Carrier lock | 0.08 kg/pcs |
| Z-list No. 51C (1.0 steel) | 0.52 kg/m |

Latest information: www.lautex.com

All products are subject to modifications without prior notice