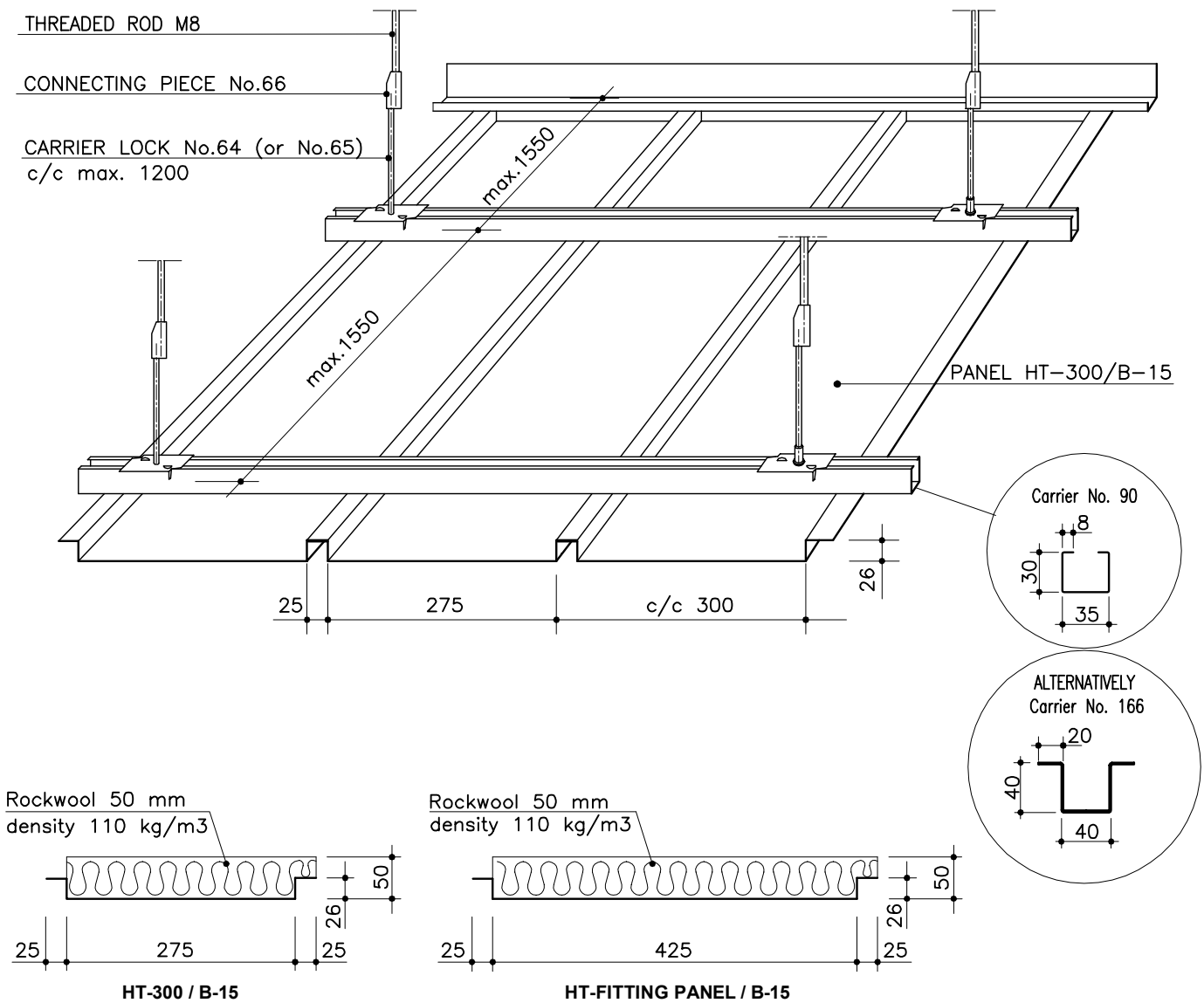


MARINE PANEL LAUTEX HT-300 / B-15 / A-30 DECK



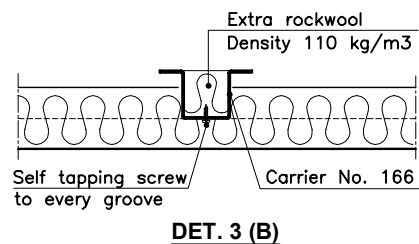
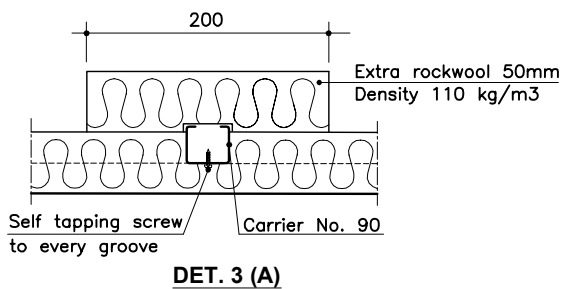
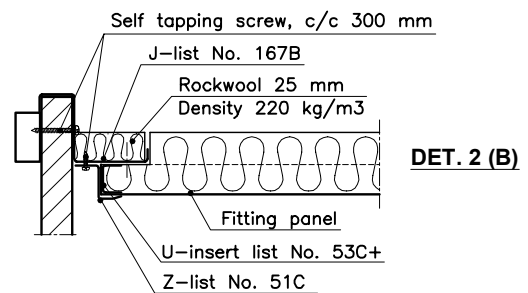
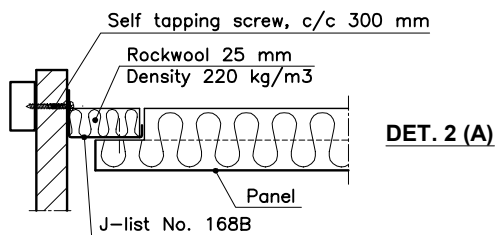
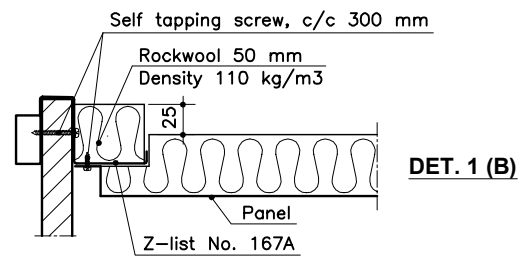
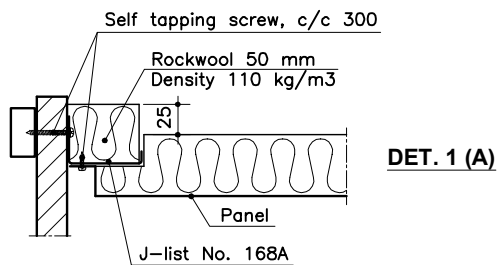
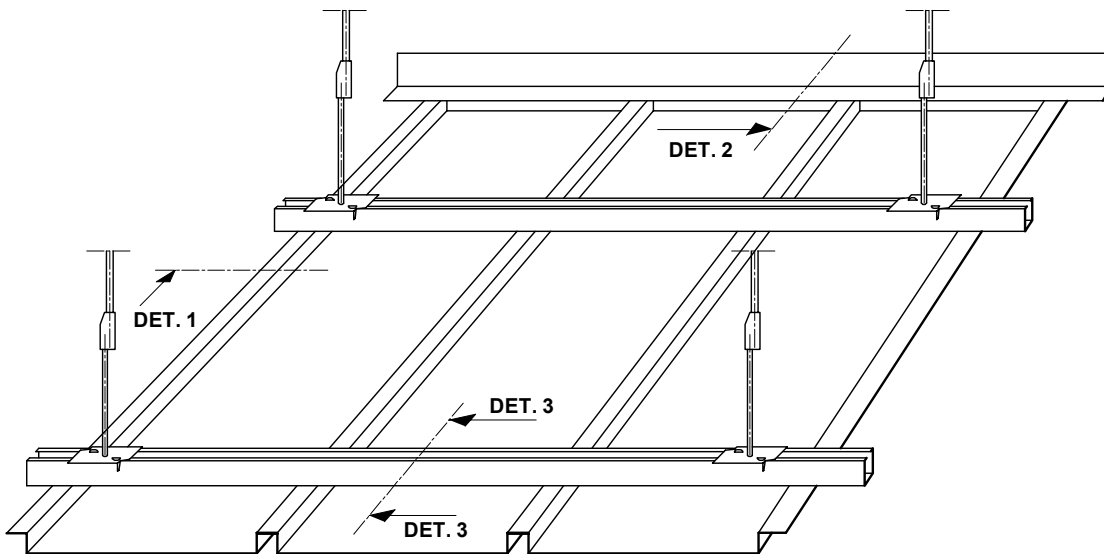
HT-300 PANELS / CLASSIFICATION "B-15"

Material	0.6 mm steel
Width	200 mm, 300 mm, fittings max. 450 mm
Height	26 mm (50 mm with insulation)
Length	max 6500 mm
Insulation	rockwool, density 110 kg/m ³ , s=50 mm
Finish	stove enamelled according to any well-known colour chart
Protective film	the surface is provided with a protective film
End bendings	standard
Extra rockwool	density 110 kg/m ³
Other special solutions	please contact our technical information department

Latest information: www.lautex.com

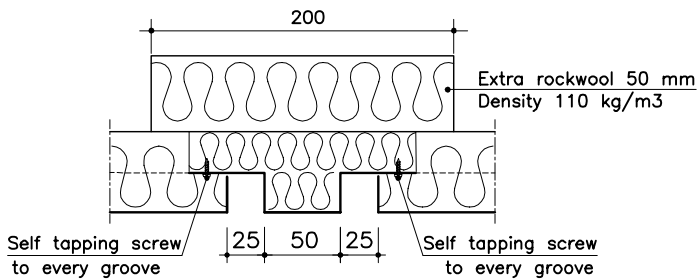
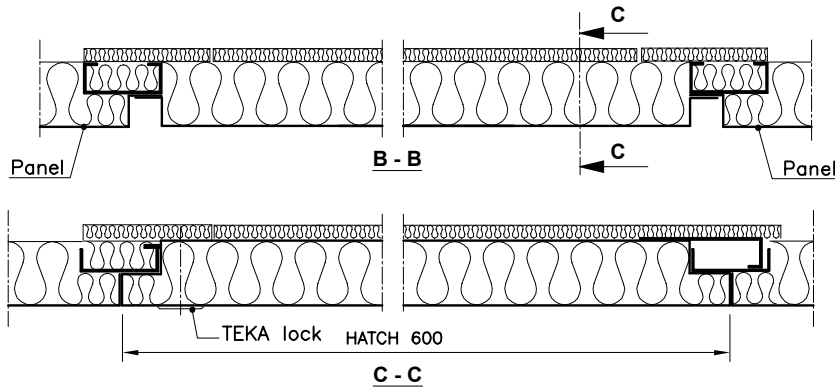
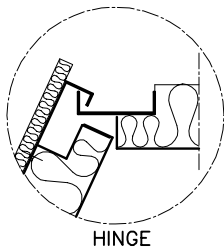
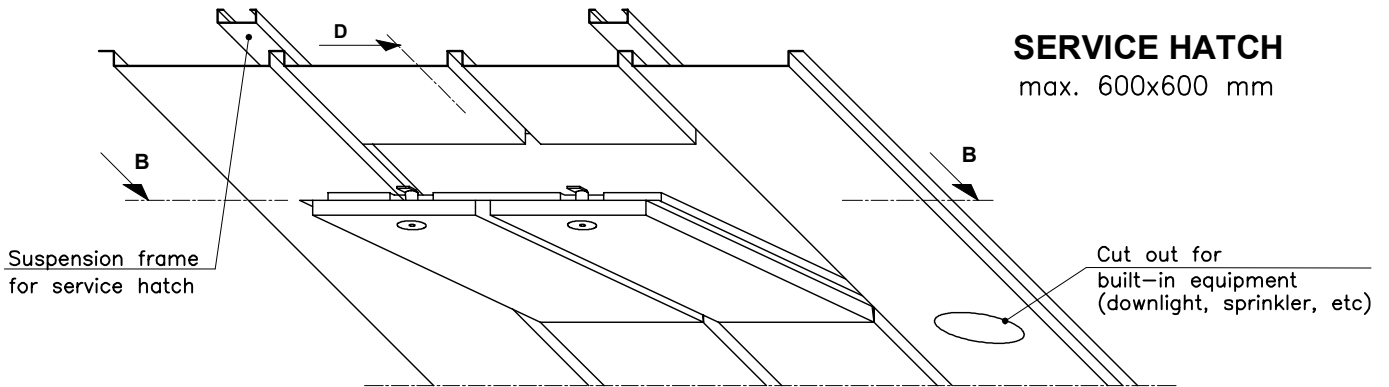
All products are subject to modifications without prior notice 2018

MARINE PANEL LAUTEX HT-300 / B-15 / A-30 DECK



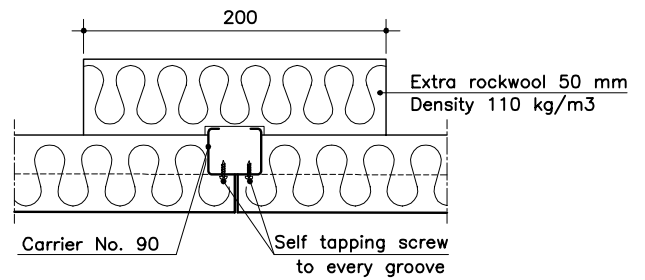
Latest information: www.lautex.com
 All products are subject to modifications without prior notice 2018

MARINE PANEL LAUTEX HT-300 / B-15 / A-30 DECK

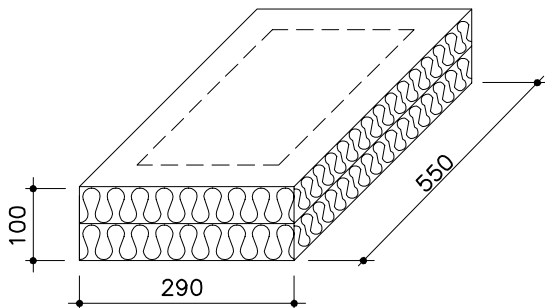


D-D (A)

PANEL JOINT



D-D (B)

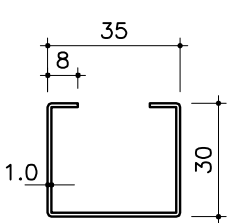


Wool box above the equipments

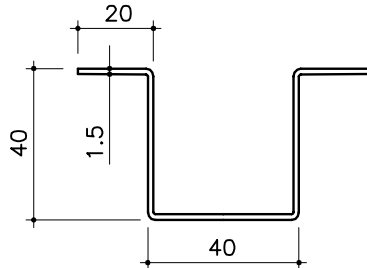
Latest information: www.lautex.com

All products are subject to modifications without prior notice 2018

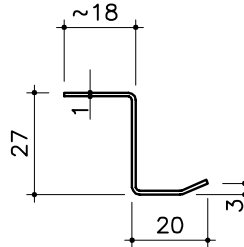
MARINE PANEL LAUTEX HT-300 / B-15 / A-30 DECK ACCESSORIES



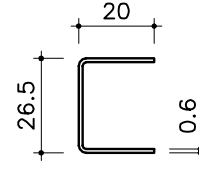
No. 90. CARRIER



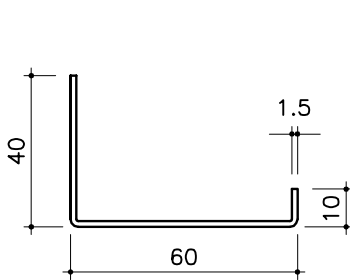
No. 166. CARRIER



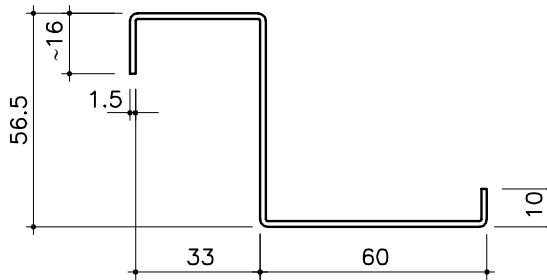
No. 51C. Z-LIST



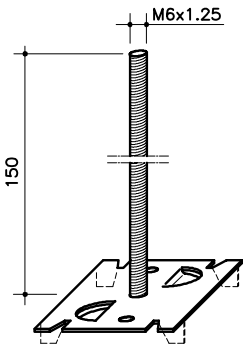
No. 53C+
U-INSERT LIST



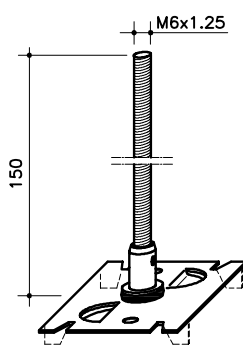
No. 168A and 168B J-LIST



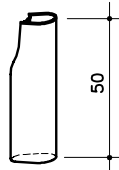
No. 167A and 167B Z-LIST



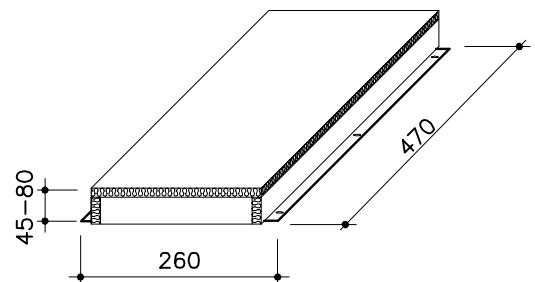
CARRIER LOCK
No. 64



CARRIER LOCK
No. 65
VIBRATION INSULATED



CONNECTING PIECE
No. 66



Box above the equipments
Insulated metal box

THEORETICAL NEED OF SUSPENSION STRUCTURES

Product	Need of material
Carrier No. 90	1.2 - 1.6 m/m ²
Carrier lock	1 pcs / carrier meter
Z-list No. 51C	0.8 - 1.4 m/m ²
Screw 4.2x13 No.75	~7 pcs /m ²

WEIGHT OF PANELS KG / M²

Panel	HT-300/B-15
Material	0.6 mm steel
Weight	11.2

WEIGHT OF OTHER CEILING MATERIALS

Extra rockwool	5.50 kg/m ²
Carrier No. 90	0.83 kg/m
Carrier lock	0.08 kg/pcs
Z-list No. 51C (1.0 steel)	0.52 kg/m

Latest information: www.lautex.com

All products are subject to modifications without prior notice 2018